

What does a map do and how do we use them?

Geographical Concepts

Retrieval

Rights Respecting Schools



Place



Foundation
Year 1



NAME AND
NATIONALITY



IDENTITY

Where?



Key Vocabulary

Map	A picture of a place drawn from above
Key/ legend	A list of symbols that appear on a map
Compass	A tool for finding direction
North, East, South, West	Four simple compass points
Aerial view	A view from above
Ground level view	A view from the ground

Different kinds of maps



Fieldwork



What?

1. **Maps** help people travel from one place to another

Maps are **drawings of actual places** but they use **symbols** and lines to show real life objects like roads, fields and buildings

There are many different types of maps e.g. sketch maps, OS maps and road maps

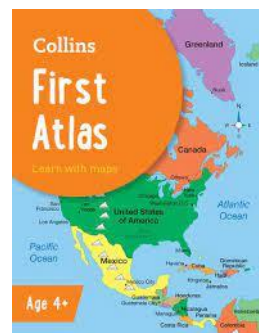
The symbols on a map are labelled in a **key**.

All maps contain: A **title**, **symbols**, a **key**, a **compass rose**, different **colours**



3. An **atlas** is a book that shows a **variety of different maps at different scales**. They usually contain maps of the **world, continents and countries**

They contain a **contents** page, at the front. They contain an **index** page at the back. These help us find the information we need in the atlas quickly.



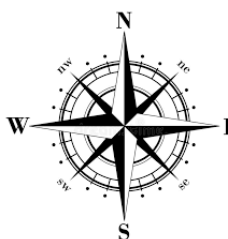
2. A **compass** is a tool for finding **direction**.

There are **4 main points** on a compass

They are **North, East, South and West**.

The needle on a compass always points to the North (North Pole)

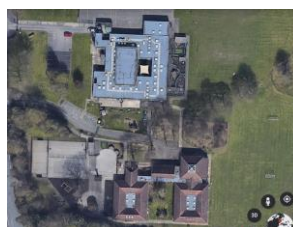
We can use compass points to **describe the location** of places around the world e.g. Scotland is North of England. France is South of the UK



4. An **Aerial view** is from above a '**birds eye view**'

It is a really useful way of seeing the world that is not on a map.

Ground view describes the view that we see when **walking along the street**.



You will also be going on a **field work trip** of the local area Following the route that you marked on your maps in Lesson 2.